



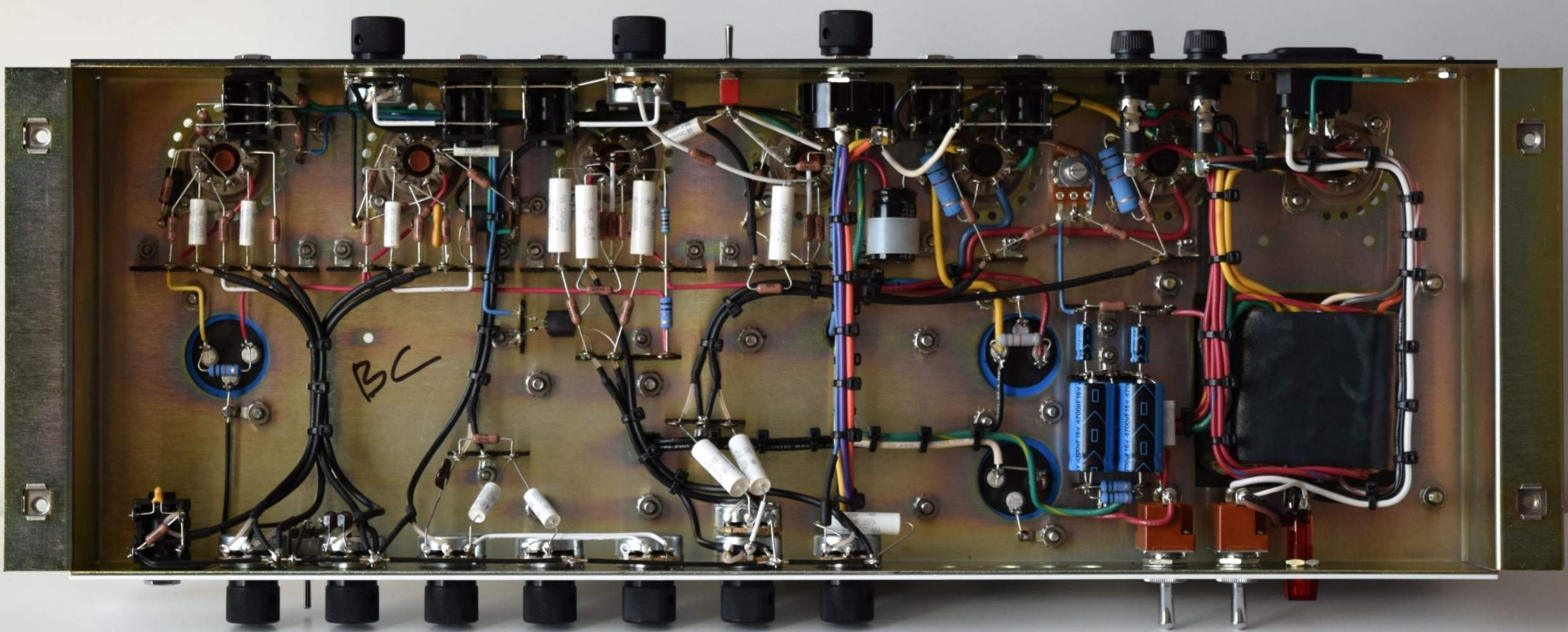
hand-made all-tube non-clone guitar amps

bc audio
 SAN FRANCISCO
 bcaudio.com

PG PREMIER GUITAR
 PREMIER GEAR

Guitar Player
 EDITORS'
 PICK

Vintage Guitar
APPROVED
 GEAR



HAND CRAFTED PERFORMANCE.

**"I build amps
for people who appreciate
things that aren't meant to be
something for everyone, but
everything to someone."**

Over the last decade, in my workshop in San Francisco, I developed an award winning line of guitar amps, unique for their octal preamps and true point-to-point construction. These groundbreaking amps have found their way onto hit records and concert stages all over the world.

Why Octals?

Nearly all tube guitar amps built since the 1960s use 12AX7 preamp tubes. I

journeyed further into the past to bring you something new for today - the 6SL7GT hi-mu twin triode. In the right circuit, this long-lost octal (8-pin) tube sounds bigger and badder than even the most prized NOS 12AX7.

Cleans are full and warm - clear and naturally chimey. The transition between clean and dirty tones is amazingly smooth. When pushed hard, it breaks up like a power tube, with a creamy, thick, harmonically rich kerrang that will remind you of a great vintage amp cranked up loud.

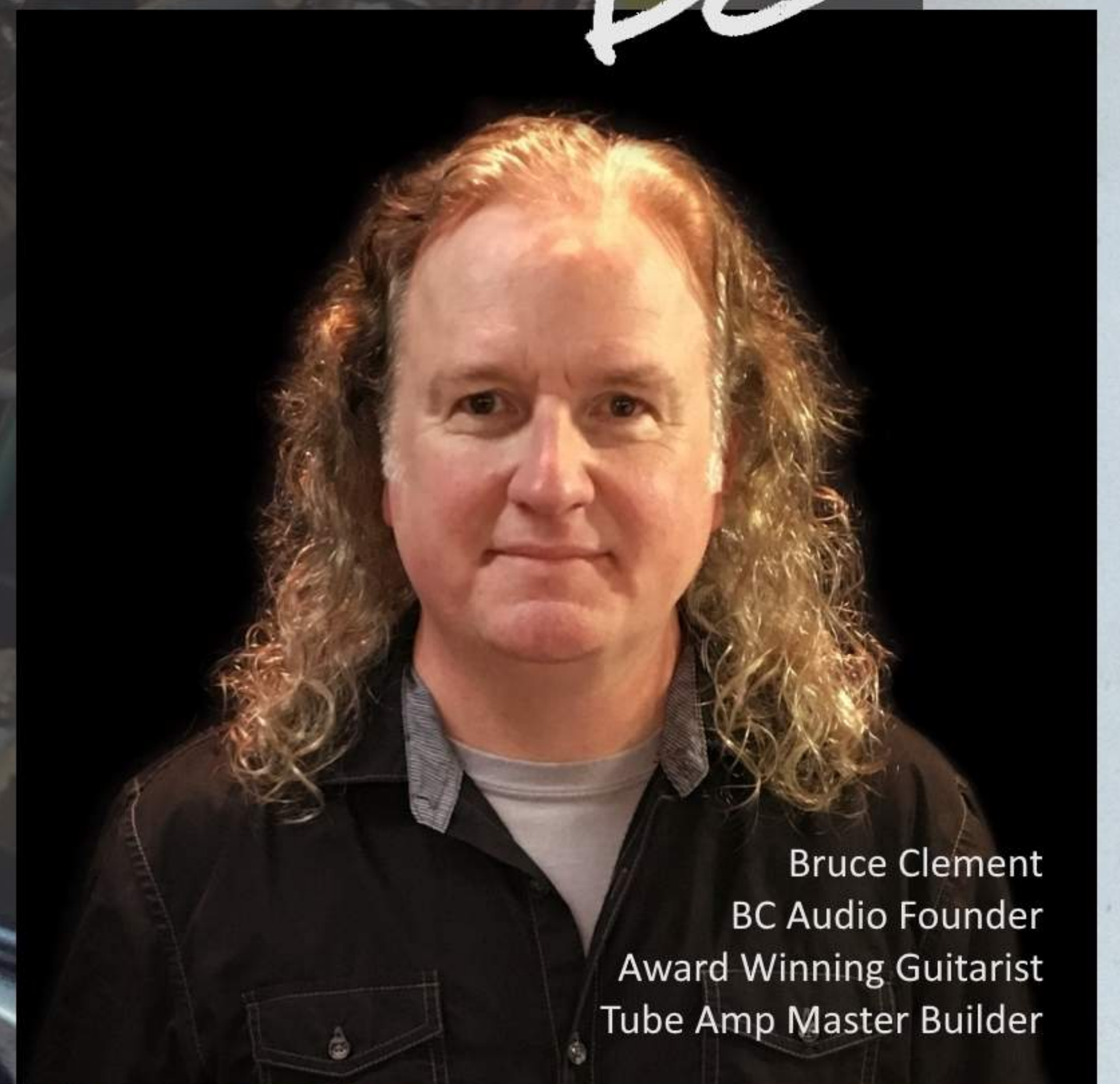
Why point-to-point?

How an amp is built determines how it sounds. Using top quality components and many hours of hand work, I go beyond "boutique" to create amps of an even higher quality. Guitar Player declared them "among the best-made

guitar amplifiers we've seen." The sonic result of that extra work: astounding clarity that you will hear and feel.

I personally cut, strip, bend, mount and solder every component and every wire in your amplifier by hand - because your tone matters to me.

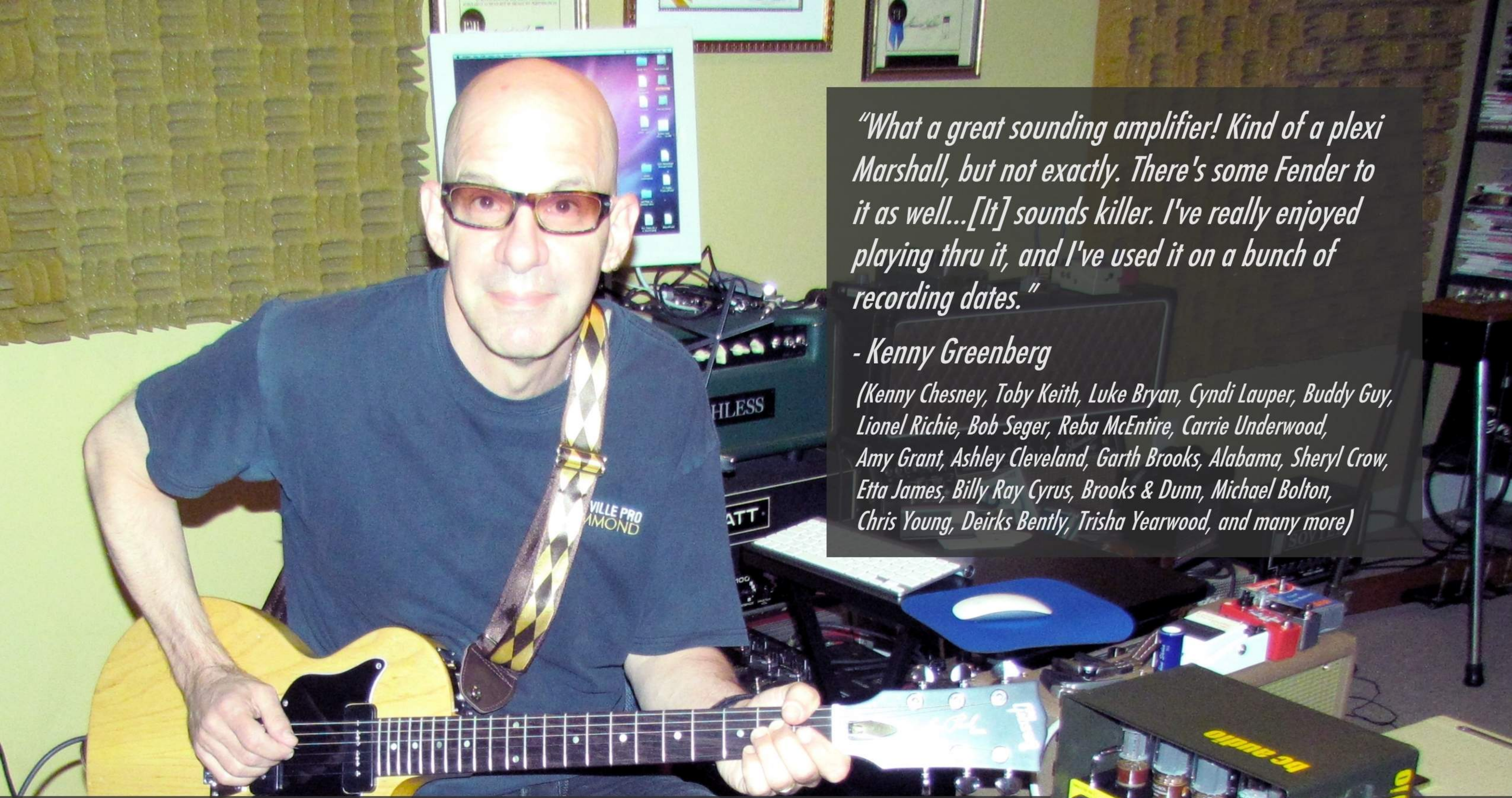
BC



Bruce Clement
BC Audio Founder
Award Winning Guitarist
Tube Amp Master Builder



BC Audio San Francisco 415.310.3087 bcaudio.com



"What a great sounding amplifier! Kind of a plexi Marshall, but not exactly. There's some Fender to it as well...[It] sounds killer. I've really enjoyed playing thru it, and I've used it on a bunch of recording dates."

- Kenny Greenberg

(Kenny Chesney, Toby Keith, Luke Bryan, Cyndi Lauper, Buddy Guy, Lionel Richie, Bob Seger, Reba McEntire, Carrie Underwood, Amy Grant, Ashley Cleveland, Garth Brooks, Alabama, Sheryl Crow, Etta James, Billy Ray Cyrus, Brooks & Dunn, Michael Bolton, Chris Young, Deirks Bently, Trisha Yearwood, and many more)

YOU'VE ALREADY HEARD THIS AMP.



Greg Karlo



Rob Laakso



Mark Johnson

"Good lord, this amp is amazing! I wouldn't play through anything else!"
- Greg Karlo (Safety Orange)

"My go-to amp for recording."
- Rob Laakso (Kurt Vile & The Violators)
"Bruce makes a very cool amp. His wiring and design are the best in the industry. You rarely see this kind of art in electronics."
- John Love (Love/Hate, Jon Love & The Haters)

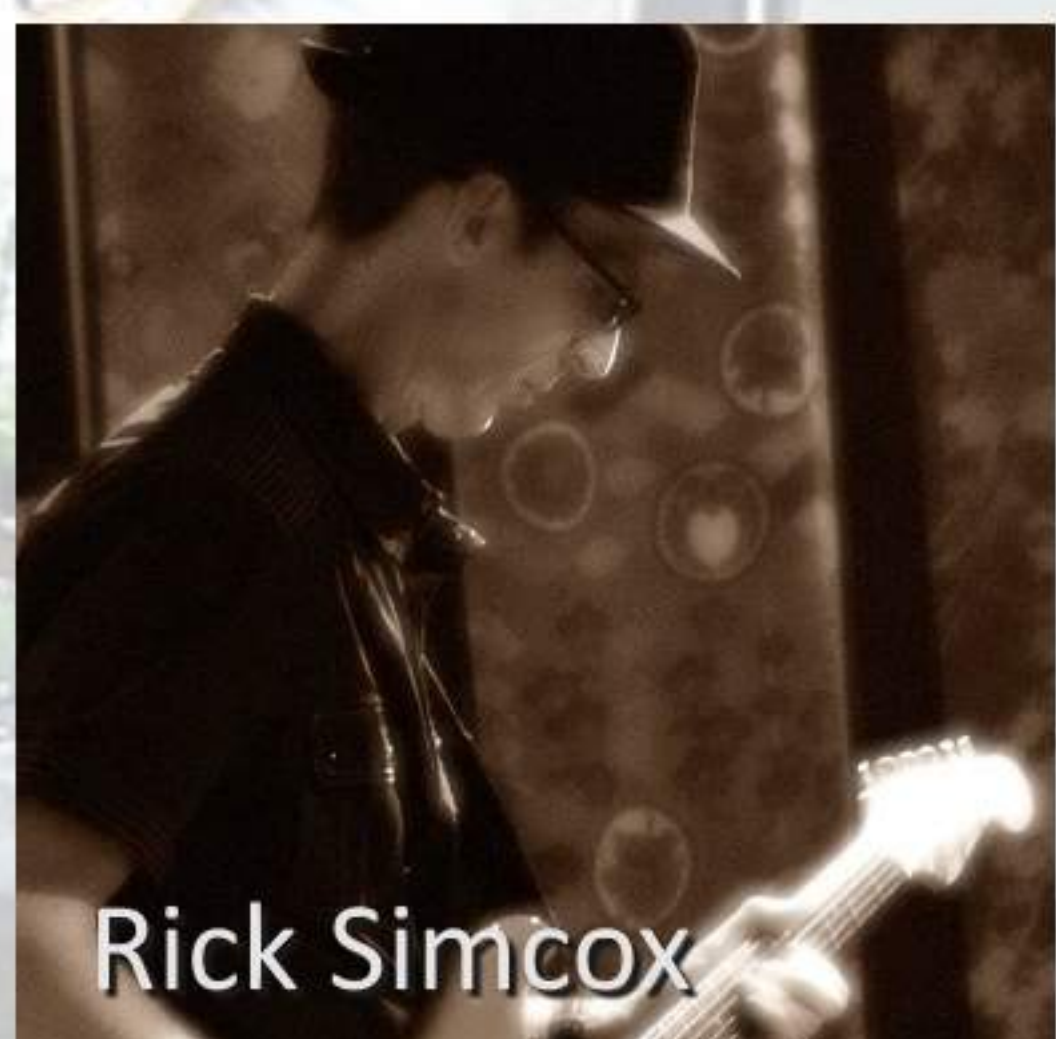
"I love it!!!" -Mark Johnson (Delta Moon)
"I am proud to be carrying BC Audio."
- Mickey Kappes (Distortion Brothers Guitar Shop)

"Really digging the amp. Nice tight tones and a great solid sound all night."
-Rick Simcox (Rick Simcox & The ToneQuesters)

"The amp is amazing. The distortion is bliss, so lovely on the ears."
- Ben Coleman, Electric Violinist (David Gilmour, Nick Laired Clowes, etc.)

"I can not believe how good this thing sounds. My other amps have become dust collectors."
- Craig Beck (Craig Beck Guitar Studio)

More at bcaudio.com/raves



Rick Simcox



Ben Coleman



Jon Love



Craig Beck
Craig Beck
guitar studio



Mickey Kappes



THE PRESS AGREE: BC AUDIO ROCKS.

"...an amp with a voice of its own – and possibly one of the best plexi-style amps ever." **Vintage Guitar APPROVED GEAR**

The range of tone is simply astounding, from the barest hint of warm signal breakup all the way to tweed Bassman-like meltdown – and everything in between." - Vintage Guitar

"...among the best-made guitar amplifiers we've seen.

The JMX50 offers much of what is cherished about vintage Marshalls: ballsy, in-your-face presence, firm lows and a harmonics-infused treble that sings sweetly when pushed...

The JMX's use of octal tubes helps to bring more clarity and dimension to the mix, and the result is an amp that stands out from the crowd of Marshall clones." - Guitar Player

"Once again we are smitten with this new amplifier.

The JTX50 sounds as smooth and toneful as an amplifier can possibly sound.

Clement knows what he is chasing and he simply gets it...We love Clement's work and every amplifier we have reviewed has spoiled us rotten." - The ToneQuest Report

"The cleans were huge and full with just enough grit...monstrous blues-rock hues that would make Paul Kossoff smile.

...heavenly hard rock and metal sounds, again with the emphasis on fat, broad guitar tone – no thin, brittle flavors, just earthshaking guitar tones.

From the superb build quality to the stunning array of tones inside, it's a top-end tone tool any guitarist would love to own. **Vintage Guitar APPROVED GEAR**

With gear of this caliber, price isn't the point. If you're looking for a new guitar head in the 'best of the best' category, check out this BC Audio model. It's a serious contender." - Vintage Guitar

"I was floored by how lively and full the amp's clean tones sounded... I relished the sparkling harmonics of clean arpeggios and clean-toned Keith Richards-style riffing.

The No. 10's tones hit me in the chest more strongly than anticipated. The amp's delivery simply feels more powerful than equivalent amps with 12AX7s. **PG PREMIER GEAR**

The No. 10 is truly a force to be reckoned with." **PREMIER GEAR AWARD** - Premier Guitar

"Five minutes with this amp and you will be walking around the room wondering how you missed this tone all your life.

...Clement's amps are entirely unique...Simply put, you need a BC Audio rig." - The ToneQuest Report

"Bell-like clean tones of a Vox AC30, the toughness of a blackface Fender...

Like every amp you've ever heard, yet something all together different with its own character and vibe...Bravo!" **Guitar Player EDITORS' PICK** **EDITORS' PICK AWARD** - Guitar Player

"A pure and gorgeous saturated tone that reminded me of a mix of a Superlead and an AC30. **PG PREMIER GEAR**

The amp had a presence about it that felt both familiar and new at the same time." **PREMIER GEAR AWARD** - Premier Guitar

"One of the best sounding compact and moderately-powered rigs we have ever reviewed. Yes, we said that, without reservation." - The ToneQuest Report

More at bcaudio.com/reviews



Introducing the first and only amp to *footswitch* between 50 & 100 watts.

The Grand Prix 100 is a meticulously hand-crafted 100 watt all-tube guitar amplifier that boasts two channels, two modes per channel, 3-band EQ, Presence and Depth controls, and an effects loop - plus a revolutionary *Dual Power* footswitch control that gives you the power to step out in front of the mix.

The *Dual Power* footswitch controls more than amp's maximum power. By engaging a second pair of power tubes, it gives you a true increase in volume, regardless of channel settings, or which channel is active.



Nearly four years in the making, the Grand Prix 100, launched at the 2017 NAMM Show, possesses massive power and vast headroom, with two expertly crafted channels, each with two highly toneful modes, designed for the gigging guitarist.

FEATURES

- EL34 Power: 50/100 Watts, Foot-Switchable
- 6SL7 Octal Preamp
- Two Channels
- Two Modes per Channel
- Bass/Mid/Treble Controls
- Presence and Depth Controls
- Effects Loop
- Tube Complement: 4x EL34, 3x 6SL7
- True Point-to-Point Construction



THIS IS HIGH PERFORMANCE.

Grand Prix 100

More at bcaudio.com/grandprix



"ONE OF THE BEST PLEXI-STYLE AMPS EVER." - Vintage Guitar



"As smooth and toneful as an amplifier can possibly sound... Playing through this amplifier gives you the freedom to really work with the harmonic character of the guitar and variable levels of sustain. It's as if you are occupying a new space that adds another dimension to your sound."

- The ToneQuest Report

"The use of octal tubes helps to bring more clarity and dimension to the mix, and the result is an amp that stands out from the crowd of Marshall clones."

- Guitar Player

The Octal-Plex Series is a family of guitar amps based on Marshall plexi circuits adapted for octal preamp tubes and executed with true point-to-point wiring. Modern features and a menu of circuit tweaks and customizable options make it easy for you to create your own signature amp.

The implementation of octal (8-pin) 6SL7GT preamp tubes in an amplifier built on classic plexi architecture results in an amazingly huge, powerful sound. True point-to-point wiring gives these amps a clarity beyond even an original plexi by creating a compact and direct signal path.

For the first time ever, you can experience the big sound of an octal preamp section and the clarity of true point-to-point construction in a plexi-style amplifier.

- JTX45: early plexi circuit
2x KT66, 3x 6SL7, GZ34 rectifier
- JTX50: transitional model
2x EL34, 3x 6SL7, GZ34 rectifier
- JMX50: classic 50w plexi
2x EL34, 3x 6SL7
- JMX100: 100w plexi Superlead
4x EL34, 3x 6SL7

FEATURES

- Faithful adaptation of Plexi circuits
- True Point-to-Point Construction
- Post Phase Inverter Master Volume
- Footswitch Controlled Gain Boost (Optional)
- Footswitch Controlled Volume Boost (Optional)
- Effects Loop (Optional)
- Footswitch Controlled Loop Bypass (Optional)



Octal-Plex Series

More at bcaudio.com/octal-plex



POWERFUL FLEXIBILITY.

With its two front-panel-variable, foot-switched boosts - Gain Boost and Volume Boost - Amplifier No. 10 gives the gigging guitar player more performance-critical foot switched options than most channel switching amps. Beautifully thick distortion, 3-band EQ plus Depth and Presence, two boosts and a powerful effects loop make Amplifier No. 10 a worthy partner in killing it from the stage every night.

SPECIFICATIONS:

- EL34 Power: 50 Watts
- 6SL7 Octal Preamp
- Variable Gain Boost
- Variable Volume Boost
- Effects Loop
- True Point-to-Point Construction



"BC Audio's mighty No. 10 Mk. II delivers voluptuous tones, chest-caving power, and fantastic responsiveness."

- Premier Guitar

*Amplifier No. 10-Mk.II
50w Master Lead*

BC Audio San Francisco 415.310.3087 bcaudio.com



TUBE RECTIFIED KT66 GLORY.

Amplifier No. 9 is a 45 watt non-Master Volume amplifier designed to give the gigging guitarist amazing clarity, huge overdrive tones and plenty of stage volume. Amplifier No. 9 responds dynamically to your touch on the strings and can be made to whisper or scream simply by varying your pick attack and manipulating your guitar's controls.

SPECIFICATIONS:

- 2x KT66 Power: 45 Watts
- GZ34 Tube Rectifier
- 2x 6SL7 Octal Preamp
- Variable Boost
- Optional Effects Loop
- True Point-to-Point Construction

"Five minutes with this amp and you will be walking around the room wondering how you missed this tone all your life. Well, ya did. Get over it."

- The ToneQuest Report

*Amplifier No. 9
45w Lead*

BC Audio San Francisco 415.310.3087 bcaudio.com



"Much bigger, richer and less compressed than any 18 or 20 watt Marshall or clone."
- The ToneQuest Report

"Stunning. Capable of a startlingly wide spectrum of sounds."
- Premier Guitar

"A beautifully slick, streamlined tone machine."
- Guitar Player

SIMPLICITY AMPLIFIED.

Amplifier No. 8 ratchets up the gain and gives you the power to control it. Amplifier No. 8 offers massive overdrive while retaining clarity, dynamic responsiveness to your touch and solid clean and semi-clean tones with punch. A unique Drive circuit - developed by BC Audio and not found in any other amp - allows for colossal sustain and thick, rich cleans without channel switching. Amplifier No. 8 the most versatile 3-knob amp you've ever played.

SPECIFICATIONS:

- 2x 5881 Power: 25 Watts
- GZ34 Tube Rectifier
- 2x 6SL7 Octal Preamp
- Class A/Cathode Biased
- Optional Foot-Switchable Gain Mod
- True Point-to-Point Construction

Amplifier No. 8
25w Master Lead



Available in Ammo Can, Traditional Head and 1x12 Combo

BC Audio San Francisco 415.310.3087 bcaudio.com



Ammo Can enclosure utilizes a genuine military surplus .50 caliber ammunition transport box

"One of the best sounding compact and moderately-powered rigs we have ever reviewed. Yes, we said that, without reservation."

- The ToneQuest Report

"A pure and gorgeous saturated tone that reminded me of a mix of a Superlead and an AC30."

- Premier Guitar

"Amplifier No. 7 sounds like every amp you've ever heard, yet something all together different, with its own character and vibe. Bravo!"

- Guitar Player

Amplifier No. 7
15/25w Lead

THE COOLEST LUNCHBOX EVER.

Its tones are firmly rooted in tweed Fenders and Marshall plexis, but Amplifier No. 7 possesses its own amazing rock voice. Its overdrive tones are thick and meaty, with plenty of body and awesome kerrang. Clean tones are warm and full. The transition to overdrive is incredibly smooth. It gets nice and chimy on the verge of overdrive. Crank it up and it gets thicker and richer while retaining amazing clarity.

SPECIFICATIONS:

- 2x 6V6 or 2x 5881 Power: 15 or 25 Watts
- 5Y3 or GZ34 Tube Rectifier
- 2x 6SL7 Octal Preamp
- Class A/Cathode Biased
- Non-Master Volume
- True Point-to-Point Construction



Available in Ammo Can, Traditional Head and 1x12 Combo

BC Audio San Francisco 415.310.3087 bcaudio.com

“We think you should seriously consider an amp built by Bruce Clement. You certainly won’t have heard anything like it, and that’s an iron-clad guarantee.”

- The ToneQuest Report

bc audio

hand-made all-tube non-clone guitar amps



SAN FRANCISCO

415.310.3087

bcaudio.com